

Stratus Tool Technologies, LLC
OIL FILTER ADAPTER
P/N'S
C6LC-L, C6LC-S, C6SC
C6LC-11/15, CO-300, TAF

**INSTRUCTIONS
FOR
CONTINUED AIRWORTHINESS**



C6LC-L



C6LC-S



C6SC



C6LC-11/15



CO-300



TAF-Long



RECORD OF REVISIONS

Revision	Revision Date	Description of Revision
-	04/06/2017	Initial release
A	08/02/2017	Added text, Drawings, and Table
B	03/05/2020	All pages. Incorporated Copper Gaskets
C	05/25/2022	All pages. Lower Copper Gasket replaced with ST07 Lower Gasket

List of Effective Pages

Revision	Revision Date	Description of revision
-	04/06/2017	Initial release
A	08/02/2017	ALL PAGES, Added text, Drawings, and table
B	03/05/2020	Revised Pages 2 through 6 to incorporate Copper Gaskets.
C	05/25/2022	Revised Pages 2 through 6 to incorporate ST07 Lower Gaskets.



Instructions for Continued Airworthiness

1. DESCRIPTION

This modification removes the oil screen and replaces it with an oil filter adapter.

2. CONTROL, OPERATION INFORMATION / SPECIAL PROCEDURES

Refer to Table 1 on page 6 for applicable installation instructions.

3. SERVICING INFORMATION

The applicable installation instructions contain the information necessary to perform maintenance. Stratus Service Bulletins also contains information relative to properly inspecting and installing F&M and Stratus oil filter adapters.

4. MAINTENANCE INSTRUCTIONS

At each oil change and each 100 hour or annual inspection:

- a) Reference page 5 for identification of “C” style and “TAF” style adapters: Inspect the oil filter adapter for oil seepage. If oil seepage is detected, replace both gaskets with new gaskets. If a fiber gasket is encountered, DO NOT reuse it. Do NOT install a fiber FM07 gasket in any F&M or Stratus oil filter adapter. Reinstall the adapter in accordance with the applicable Stratus Tool Technologies LLC Installation Instructions.
- b) Use of a torque wrench is mandatory when installing or reinstalling an oil filter adapter. Safety-wire the spool and the sleeve as shown in the applicable installation instructions to appropriate locations on the engine accessory case. Run the engine and check for oil leaks.
- c) Check the safety-wire for proper installation and security. Do not safety-wire the transfer spool to the sleeve of the adapter or to the airframe. The transfer spool and sleeve must be safety-wired to appropriate safety-wire locations on the engine accessory case.
- d) Verify that the sleeve will not rotate around the oil transfer spool when 10 to 20 pounds of force is applied to an oil filter mounted on the adapter in a manner that would tend to rotate the sleeve around the spool. If the sleeve rotates around the spool, remove the safety-wire, disassemble the adapter, and replace both gaskets with new gaskets. Tighten the adapter in accordance with the applicable Stratus Tool Technologies, LLC Installation Instructions. Safety-wire the transfer spool and sleeve to appropriate safety-wire locations on the engine accessory case. Safety-wire the oil filter to a safety-wire hole on the adapter. Install and tighten the oil filter in accordance with the oil filter manufacturer’s instructions. Run the engine and check for oil leaks.



- e) For TAF style adapters: Ensure that the mounting hardware is securely tightened to the torque value specified in the applicable CMI overhaul manual for the engine model onto which the filter adapter is being installed. Run the engine and ensure that there are no oil leaks.
- f) Use of a torque wrench is mandatory when installing, tightening, or reinstalling an oil filter adapter on the engine.

5. REMOVAL AND REPLACEMENT INFORMATION

Refer to Table 1 on page 6 for applicable installation instructions.

6. DIAGRAMS

Refer to CMI's overhaul, service and maintenance instructions for applicable engine diagrams.

7. LIST OF SPECIAL TOOLS

Refer to Table 1 on page 6 for applicable installation instructions.

8. ADDITIONAL INFORMATION FOR COMMUTER CATEGORY AIRCRAFT

Not Applicable.

9. RECOMMENDED OVERHAUL PERIODS

The recommended time between overhaul (TBO) for the Stratus Tool Technologies LLC. oil filter adapters are the same as identified in CMI data for the affected engine models. At engine overhaul, the adapter should be inspected for any cracks or other damage that would render it unsuitable for further service. If any such damage is found, retire the adapter from service or replace unserviceable parts with new or serviceable parts.

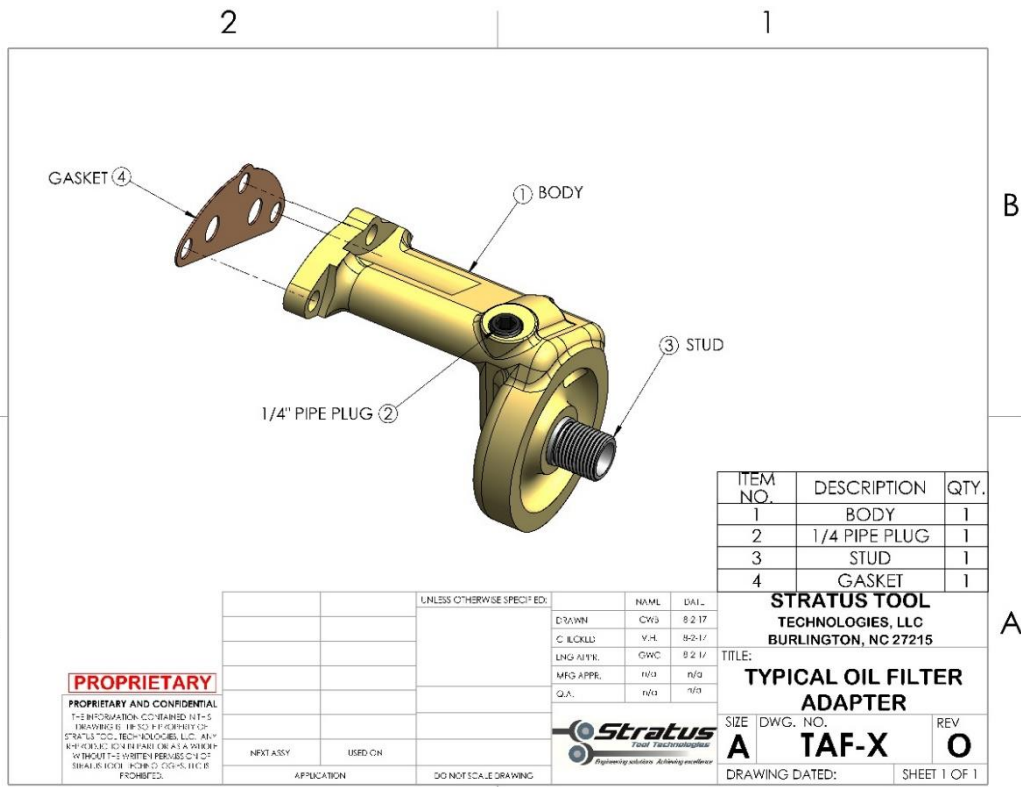
10. REVISIONS

Revisions to this document will be logged in the Log of Revisions sheet and a copy of the revised document should be distributed as required.

11. Airworthiness Limitations

NOTE: The Airworthiness Limitations section is FAA approved and specifies maintenance required under Parts 43.16 and 91.403 of the Federal Aviation Regulations unless an alternative program has been FAA approved. There are no mandatory replacement times for any component parts of the oil filter adapter(s).





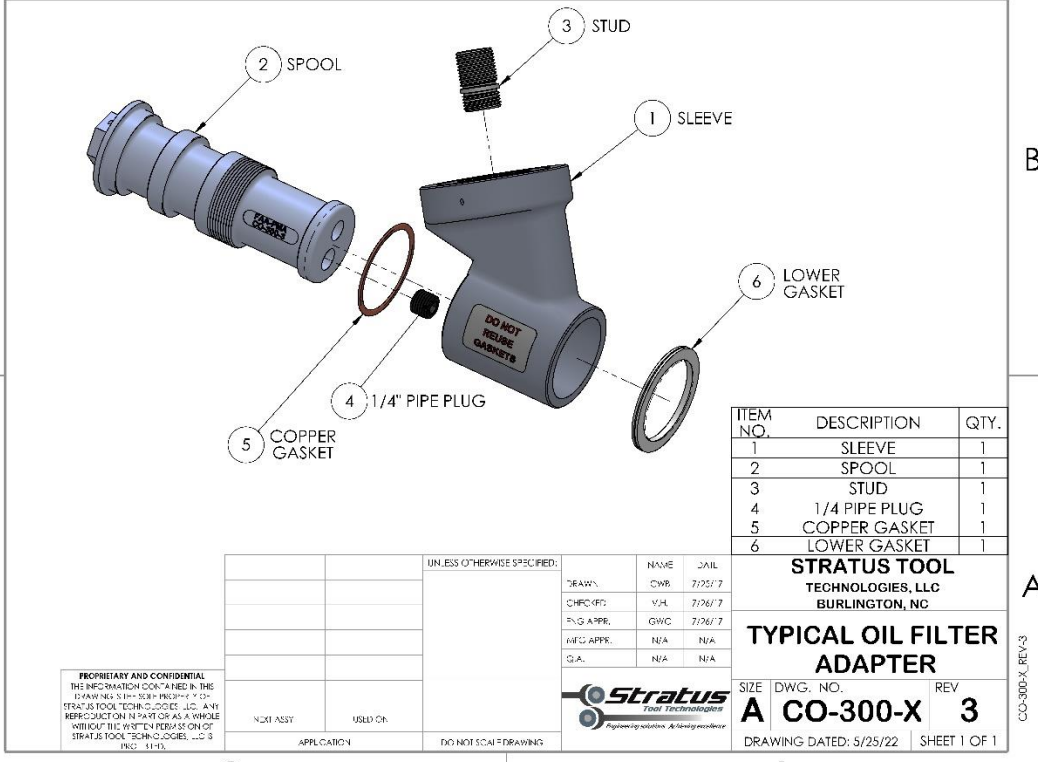
ITEM NO.	DESCRIPTION	QTY.
1	BODY	1
2	1/4 PIPE PLUG	1
3	STUD	1
4	GASKET	1

STRATUS TOOL TECHNOLOGIES, LLC
 BURLINGTON, NC 27215
TITLE: TYPICAL OIL FILTER ADAPTER
SIZE: A **DWG. NO.:** TAF-X **REV:** O
DRAWING DATED: SHEET 1 OF 1

PROPRIETARY
 PROPRIETARY AND CONFIDENTIAL
 THE INFORMATION CONTAINED HEREIN IS DRAWING IS THE SOLE PROPERTY OF STRATUS TOOL TECHNOLOGIES, LLC. ANY REPRODUCTION IN PART OR AS A WHOLE WITHOUT THE WRITTEN PERMISSION OF STRATUS TOOL TECHNOLOGIES, LLC IS PROHIBITED.

UNLESS OTHERWISE SPECIFIED:		
DRAWN	CHKD	DATE
CHECKED	BY	DATE
ENG APPR.	DATE	
MFG APPR.	DATE	
QA	DATE	

2 1
2 1



ITEM NO.	DESCRIPTION	QTY.
1	SLEEVE	1
2	SPOOL	1
3	STUD	1
4	1/4 PIPE PLUG	1
5	COPPER GASKET	1
6	LOWER GASKET	1

STRATUS TOOL TECHNOLOGIES, LLC
 BURLINGTON, NC
TITLE: TYPICAL OIL FILTER ADAPTER
SIZE: A **DWG. NO.:** CO-300-X **REV:** 3
DRAWING DATED: 5/25/22 SHEET 1 OF 1

PROPRIETARY AND CONFIDENTIAL
 THE INFORMATION CONTAINED HEREIN IS DRAWING IS THE SOLE PROPERTY OF STRATUS TOOL TECHNOLOGIES, LLC. ANY REPRODUCTION IN PART OR AS A WHOLE WITHOUT THE WRITTEN PERMISSION OF STRATUS TOOL TECHNOLOGIES, LLC IS PROHIBITED.

UNLESS OTHERWISE SPECIFIED:		
DRAWN	CHKD	DATE
CHECKED	BY	DATE
ENG APPR.	DATE	
MFG APPR.	DATE	
QA	DATE	

2 1



Table 1

FAA Supplemental Type Certificate Stratus Tool Technologies, LLC Oil Filter Adapters						
STC Number	Stratus P/N	STC Approved Engine Model List (AML)	Ref Engine Operation Manual	Ref Engine Overhaul Manual	Stratus Installation Document Number	
SE7559SW	TAF-Long	CMI C-75, C-85, C-90 Series	CMI X30012	CMI X30010	ST007	
		O-200 Series	CMI X30012	CMI X30010	ST007	
SE8409SW	CO-300	CMI C-125, C-145 Series	CMI X30015	CMI X30013	ST006	
		CMI-300 Series	CMI X30015	CMI X30013	ST006	
	C6SC					
		CMI GO-300 Series	CMI X30021	CMI X30019	ST004	
		CMI IO-360 Series	CMI X30617	CMI X30594	ST004	
		CMI TSIO-360 Series	CMI X30583	CMI X30596	ST004	
SE09356SC	C6LC-L C6LC-S	CMI O-470 Series	CMI X30097	CMI X30586	ST002 (-L) ST003 (-S)	
		CMI IO-470 Series	CMI X30024	CMI X30588	ST002 (-L) ST003 (-S)	
		CMI IO-520 Series	CMI X30041	CMI X30039	ST002 (-L) ST003 (-S)	
		CMI IO-550 Series	CMI X30605	CMI X30607	ST002 (-L) ST003 (-S)	
		CMI TSIO-520 Series			ST002 (-L) ST003 (-S)	
SE10348SC	C6LC-11/15	CMI O-470-11	*TM 1-2R-0470-2	*TM 1-2R-0470-3	ST005	
		CMI O-470-15	*TM 1-2R-0470-26	*TM 1-2R-0470-23	ST005	
Notes:						
			-END-			
1) * denotes military technical manual						
2) CMI denotes engine TCDS holder Continental Motors Inc., formerly Teledyne Continental Motors						

For additional information, please call 800-822-3200 or visit

www.tempestplus.com

Stratus Tools Technologies
2208 Air Park Drive
Burlington, NC 27215

