

# MODEL C6LC-11/15 OIL FILTER ADAPTER

Model C6LC-11/15 oil filter adapters are approved for the following  
Continental engines:

O-470-11

O-470-15



## RECORD OF REVISIONS

Revision	Revision Date	Description of Revision
---	04/06/2017	Initial Release
1	02/21/2020	Copper Gaskets

# MODEL C6LC-11/15 INSTALLATION INSTRUCTIONS

1. Verify that the following parts are included in the filter adapter kit.

<u>ITEM</u>	<u>DESCRIPTION</u>	<u>PART NUMBER</u>	<u>QUANTITY</u>
1	Sleeve	C6LC-2-11	1
2	Spool	C6LC-3-11	1
3	Copper Gasket	AN900-29	2
4	TEMPEST® Oil Filter	AA48108-2*	1
5	STC	SE10348SC	1

\*Standard with kit. See page 8 for other acceptable filters.



Note: Illustrations (Figures) incorporated into this document are for the purpose of clarifying the written text instructions and are not intended to depict any specific aircraft or engine installation.

2. Remove the oil temperature probe, oil screen, and any other parts that interfere with access to the work area in accordance with the engine and/or airframe manufacturers' instructions.
3. Thoroughly clean the threads in the oil pump body and lubricate them with clean engine oil.
4. Install one copper gasket onto the spool with the split side of the gasket turned away from the spool's flange, see Figure 1
5. Insert the spool through the sleeve.
6. Install the second copper gasket on the spool with the split side of the gasket away from the sleeve, see Figure 2.



**Figure 1**



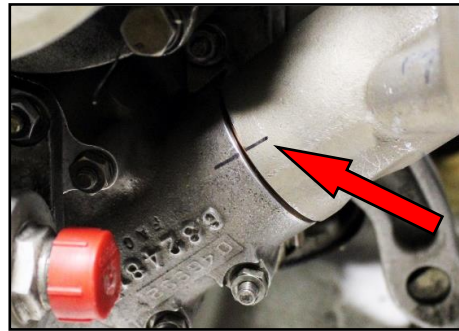
**Figure 2**

7. Using a socket as shown in Figure 3, tighten the spool just snug. Temporarily install an oil filter onto the filter mount flange. Position the filter so that at least 1/2-inch of clearance exists between the oil filter and other items in the engine compartment. At this stage, the spool should be tightened only enough to keep the filter in the proper location with respect to clearance between the filter and other items in the engine compartment.

8. Make a match-mark on the sleeve and oil screen housing, see Figure 4. Remove the filter, taking care not to move the adapter sleeve. Check the match-mark. If the match-marks are not aligned, move the sleeve so that the match-marks are aligned. If necessary, tighten the spool just enough to hold the sleeve in place with the match-marks aligned.
9. Fabricate a suitable wooden block similar to that shown in Figure 5. The block will be used to prevent the sleeve from rotating as the spool is tightened. Because installations differ, the block may not look exactly like the exemplar block shown in Figure 5. However, it should fit snugly between a point on the sleeve and an adjacent structurally sound part of the engine or airframe that is able to resist the turning forces encountered without being damaged when the spool is tightened, see Figure 6. Alternatively, a 1 ¼-inch open-end wrench can be placed on the sleeve just below the filter mount flange to prevent the sleeve from moving when the spool is tightened, see Figure 7.



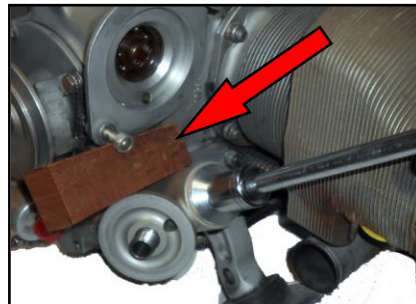
**Figure 3**



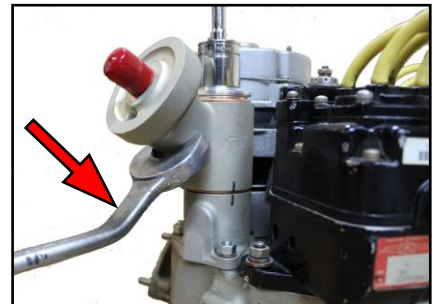
**Figure 4**



**Figure 5**



**Figure 6**



**Figure 7**

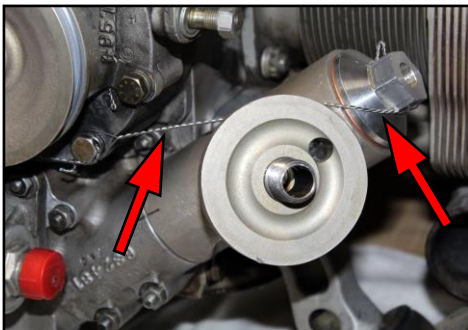
**Use of a torque wrench is mandatory per the ICA.**

Using a torque wrench, tighten the spool to 65-foot pounds of torque.

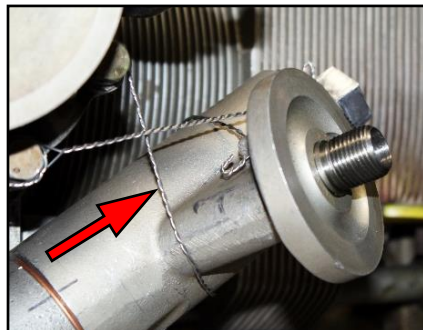
10. Place the block between the sleeve and a suitable point of resistance that will not be damaged by the forces encountered when tightening the spool, or use a wrench to prevent the sleeve from moving.
11. Check the match-mark. If it is displaced more than 1/32-inch, remove the spool and reinstall it in accordance with paragraphs 4 thru 10 using two new copper gaskets.
12. When the spool is tightened to 65 foot-pounds of torque and the match-marks are aligned within limits, apply Tamper Seal across the joint of the sleeve and oil pump body. Safety-wire the:
  - a. spool to the engine (Figure 8) and,
  - b. the sleeve to the engine (Figure 9).

Note: Wrap the safety-wire around the spool & sleeve in such a manner that they cannot turn counterclockwise.

13. Install the oil filter in accordance with the oil filter manufacturer's instructions. Safety-wire the oil filter to one of the holes in the safety wire tab below the filter mount pad, see Figure 10.



**Figure 8**



**Figure 9**



**Figure 10**

14. Reinstall any other items removed to facilitate installing the oil filter adapter in according with the engine and/or airframe manufacturers' instructions.

15. Check the engine oil level and replenish it if required. Start the engine and check for leaks around the oil filter and oil filter adapter. Run the engine for at least five minutes after normal engine oil operating temperature is achieved. Stop the engine and inspect the adapter installation for leaks. (The filter holds about a quart of oil. Thus, the engine oil level may be lower after the filter fills.) Check and adjust the engine oil level as necessary.
16. Make a detailed log-book entry referencing these installation instructions to memorialize the adapter installation and any other work accomplished contemporaneously with the oil filter adapter installation process.

**In addition to the description of work you provide in Section 8 on Form 337, you must include the following statement:**

*“A minimum of 1/2-inch clearance must be maintained between the oil filter and adjacent components. Make sure that adequate clearance exists on all sides of the filter to allow for the engine’s movement in its mounts so that that no interference occurs with controls, cables, wires or other items. If the oil filter adapter is loosened or removed from the engine for any reason, it must be re-installed using new gaskets, tightened in accordance with these installation instructions, and properly safety-wired”.*

**Spin-on oil filters approved for use on the applicable engines and air frames are approved for use with the Stratus oil filter adapters.**

**Oil filter adapter C6LC-11/15 is typically used on the following aircraft:**

**Cessna L-19 Bird Dog**

**For additional information, please call 800-822-3200 or visit**

**[www.tempestplus.com](http://www.tempestplus.com) .**

Stratus Tools Technologies, LLC  
2208 Air Park Drive  
Burlington, NC 27215

## **REFERENCE STC SE10348SC**

### **Limited Warranty**

STRATUS warrants that this oil filter adapter is free from defects in material or workmanship for a period of 90 days from the date of the original purchase by the consumer when it is installed in compliance with the manufacturer’s installation instructions and it is used for its intended purpose. In case of defects in material or workmanship, STRATUS’s obligation is to repair or replace the product at STRATUS’s sole discretion. STRATUS assumes no responsibility for incidental or consequential damages or damage due to improper installation, misuse of this product, or from failure to follow the engine manufacturer’s recommendations regarding the care and operation of the engine.

